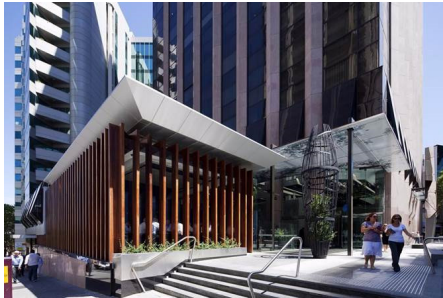


Standard Room 1.05, 1.06, 1.11, 1.12

L1, 111 St. Georges Terrace, Perth



Room specifications

- Natural light
- Ergonomically designed furniture
- Large break out area
- Help phone for immediate assistance
- Fibre optic internet on request
- Storage facilities available

Room hire inclusions

- Ceiling mounted data projector
- VGA/HDMI connection & sound
- Continuous tea/Nespresso coffee/biscuits
- Water and mints
- Presenter box with stationery
- WiFi in breakout areas
- Notepads and pens
- Whiteboard & markers
- Meet & Greet



Area (m2)	Theatre	Cabaret	Classroom	U-shape	Boardroom	Banquet
50	40	24	24	16	20	32

